

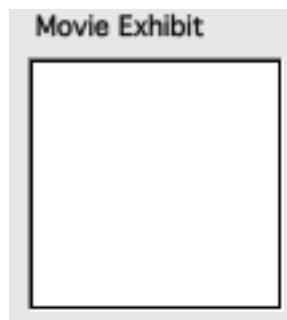


## Movies

---

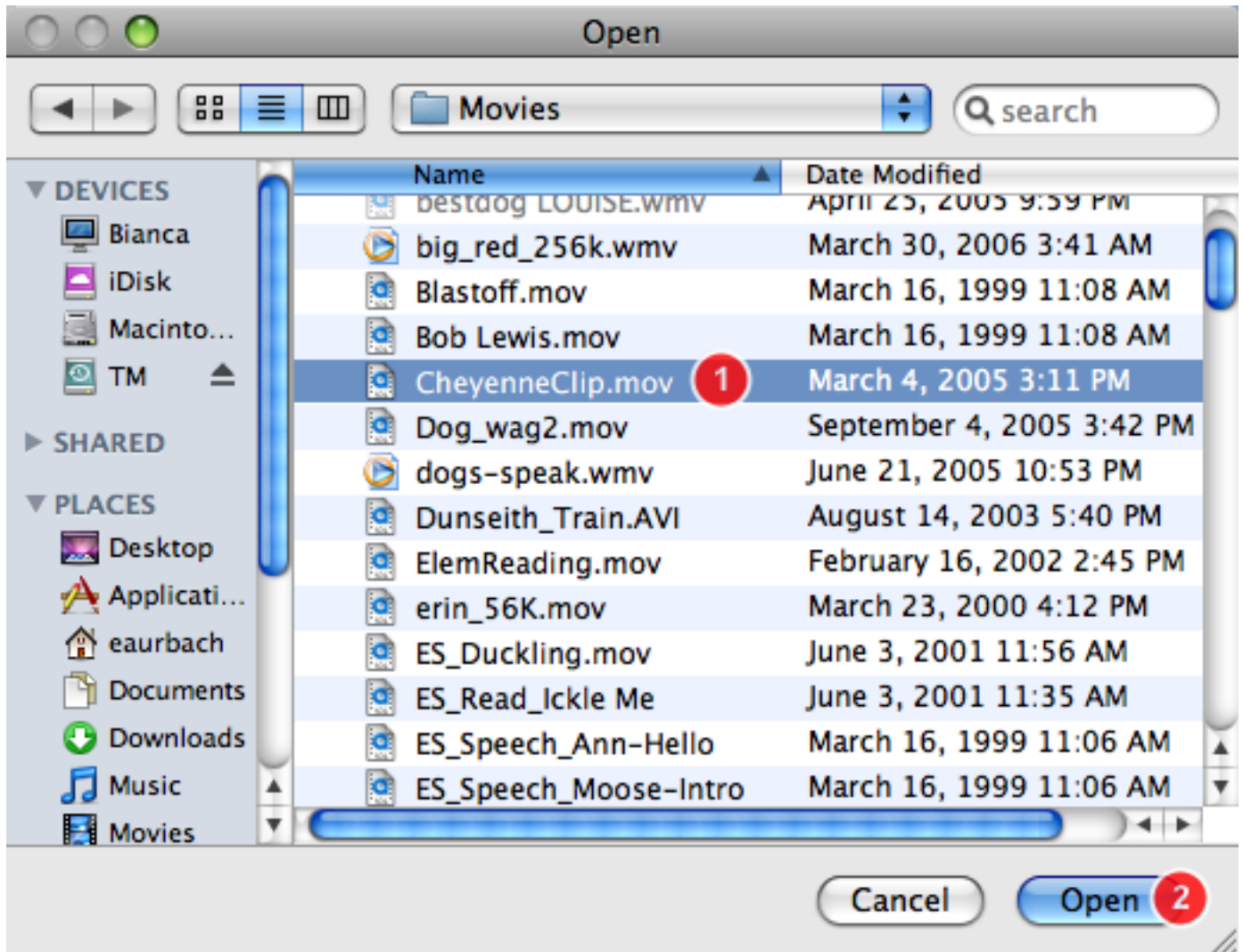
*Movie Exhibits accept any Quick-Time compatible video, including .mov, .qt. If you have a movie in another format such as .wmv - despair not - you can keep it in profiles very nicely as an External Exhibit. See the Lesson, "External Exhibits". You will need to have a movie saved on your computer.*

**Open a card to a profile with a movie exhibit and double-click it.**

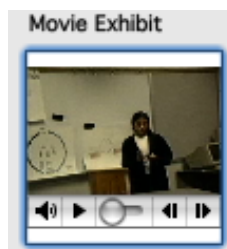




Select a movie and click Open.



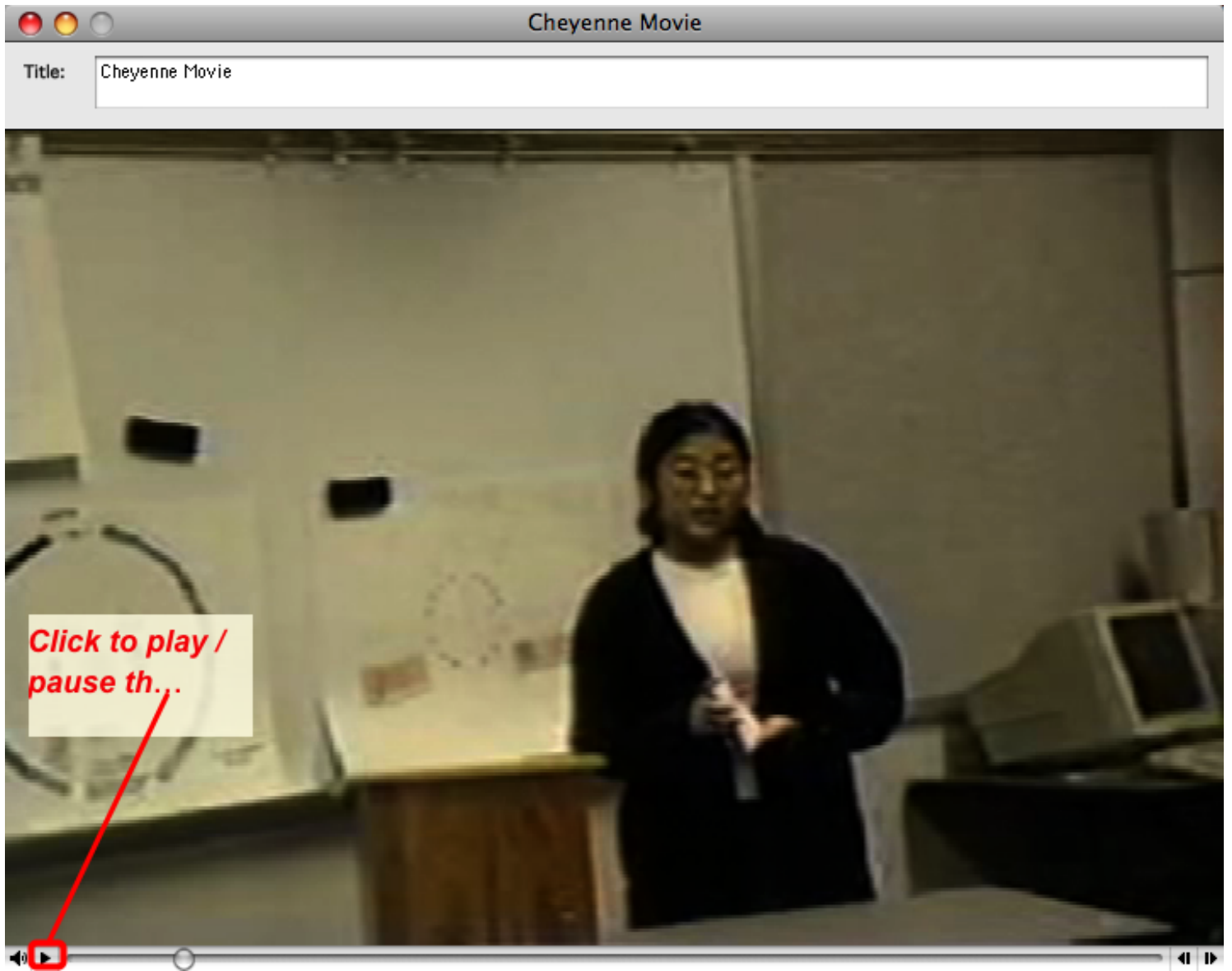
A thumb-nail of the first frame appears in the exhibit. Double-click to watch it in a new window.



Alternately: Select the movie (single click) and choose Open in New Window on the Actions menu.



Click the play button to view it.





Alternately, locate a movie on the computer and drag it to the movie exhibit.

