



External Exhibits - Using

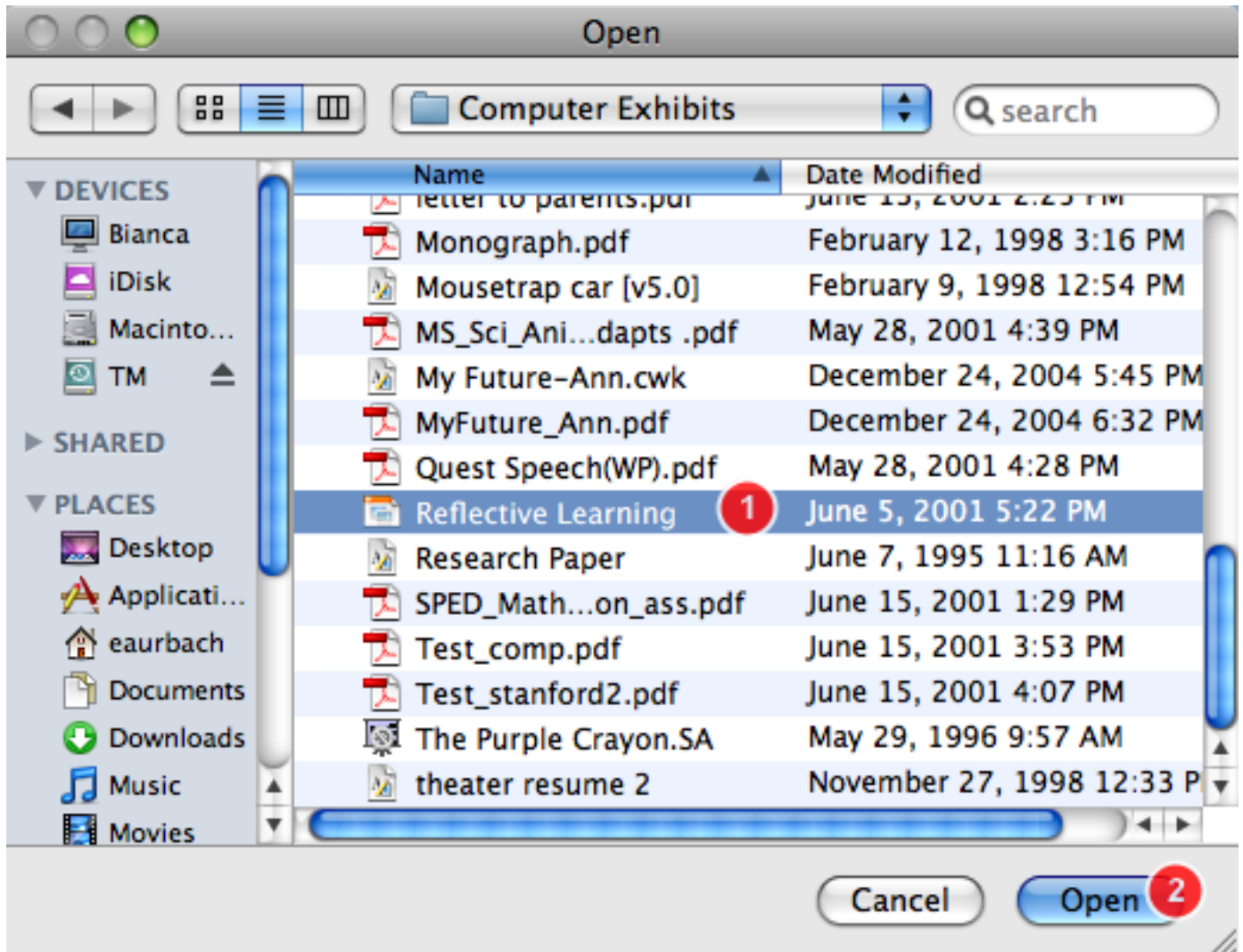
This lesson tells how to use External Exhibits, which is the exhibit to use when none of the others (text, graphic, reading, sound, web or movie) seem right. For example, External Exhibits will display Windows movies (WMV), Excel® spreadsheets, Powerpoint® and other slides, PDF® documents ... It works like this: the program logo appears as the button. When clicked, Grady runs that program (Windows Media Player®, Word®, Excel®, Adobe Reader®... whatever the program is) and displays the content. The only **caveat**: the viewing computer must have the originating program installed. So, if it's an Excel® spreadsheet you want to view, Excel® must be installed on the computer.

Open a profile to a card with an External Exhibit and double click it.

The screenshot shows a software interface with a light blue border. At the top, there are several dropdown menus for profile details: Name (Falls, Victoria), Timeframe (Summer, 2009), Domain (Technology), Topic (Contents for Technology), Example (PowerPoint Preso), and Template (Author Stack). To the right of these menus, there are fields for ID, Created (7/16/09), and Modified (7/16/09). Below these fields are several icons: a yellow square, a globe, an information icon, a 'New' button, and a trash can. There are also left and right arrow buttons and the text '1 of 1'. Below the profile details, there is a section titled 'External Exhibit' in red. Under this title, there is a button with a document icon and the text 'Double-Click to View'. To the right of this button is a large empty rectangular box labeled 'Reflection'.



Select the exhibit and click Open.

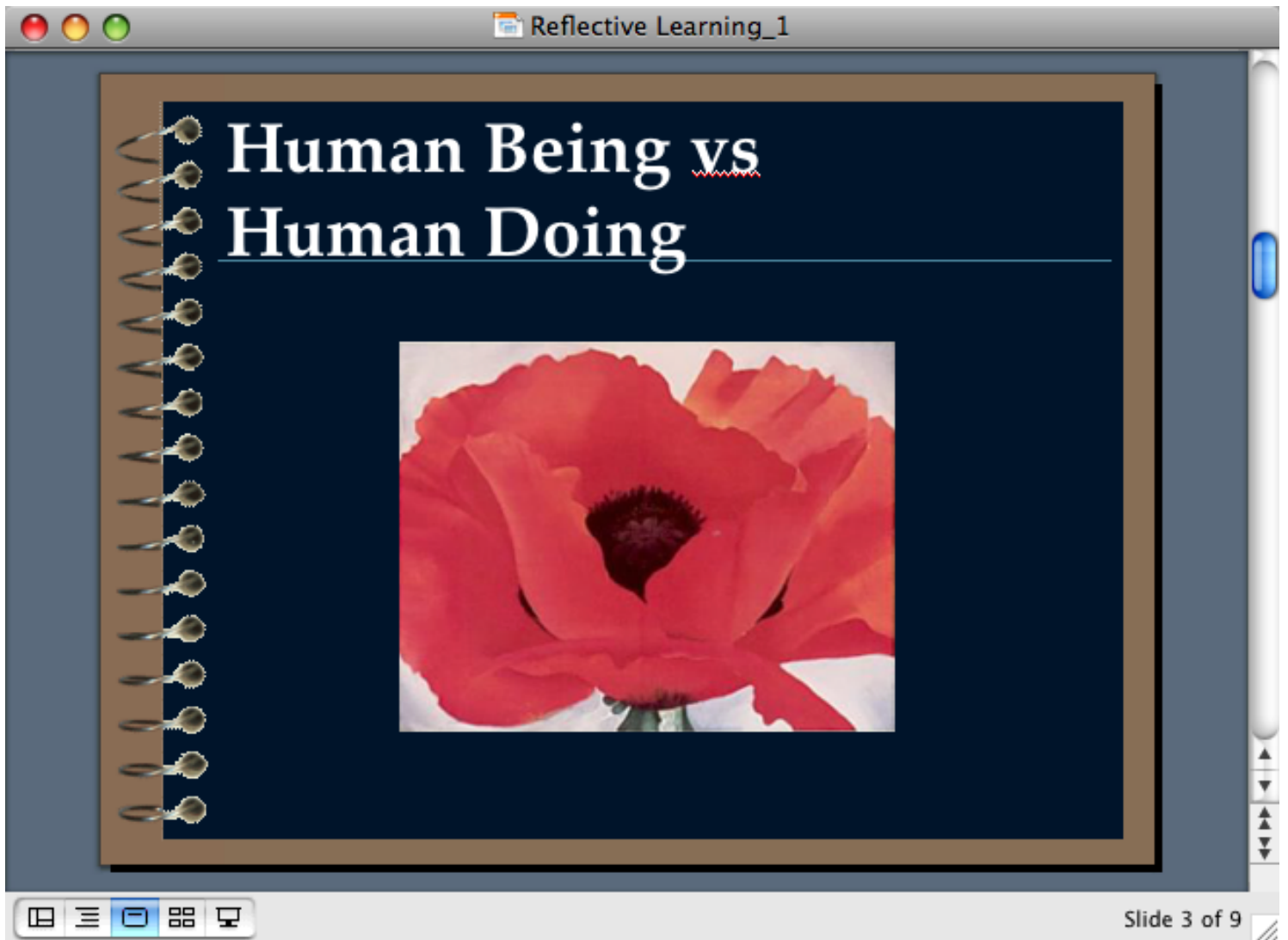


The exhibit button displays the document logo. Double-click it to see the content.



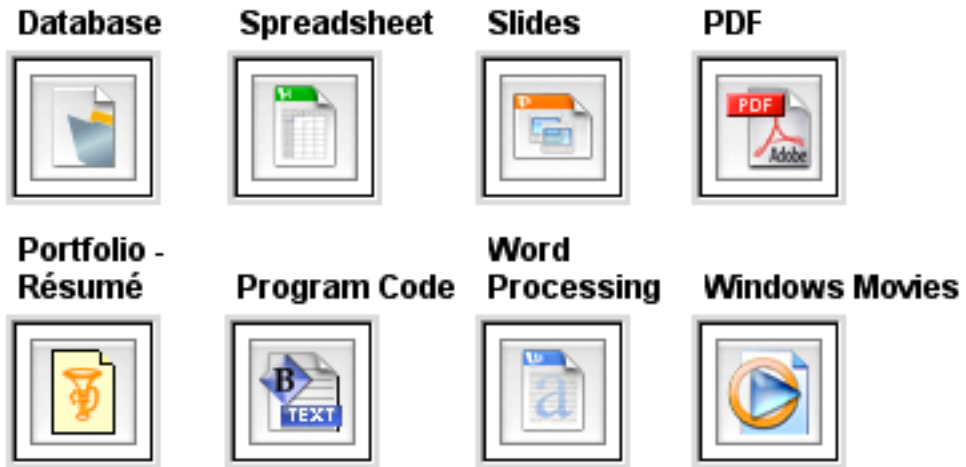


The program launches and displays the content. In this case, PowerPoint®.





Again, External Exhibits can display any material created on a computer.



... and many others. Just be sure the creating program is installed on the viewing computer.